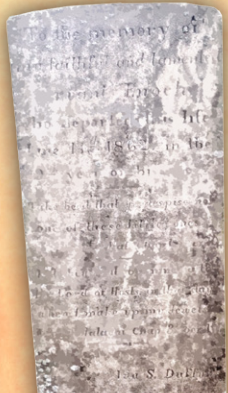
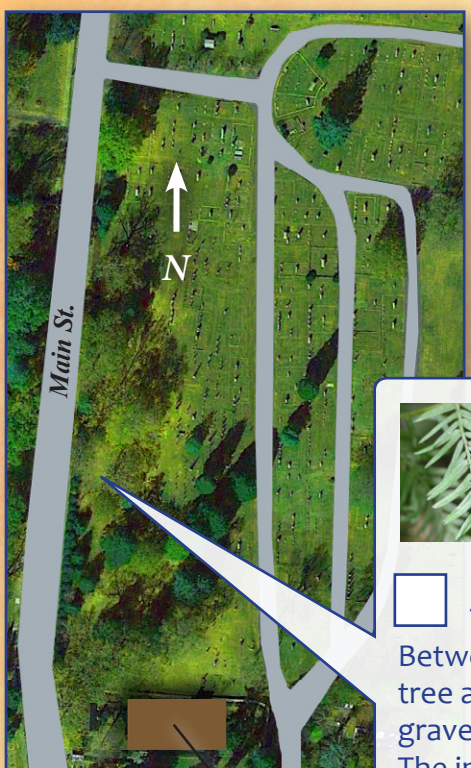


# Rutherfordton City Cemetery

The Rutherfordton City Cemetery is a place to pay respect to the lives of those who have passed, and it is also a place to learn about the town's history. The 25-acre cemetery dates to the Antebellum period, the time in history between the War of 1812 and the Civil War in 1861.

Find a gravestone...

- from the 1800s
- from a Civil War soldier
- that is so old you can't read it
- that has a tree grown around it



**A Servant's Grave**  
Between a large bald cypress tree and Main Street, there is a gravestone of a young servant. The inscription is from 1862. Can you read what it says?

St. Francis Episcopal Church

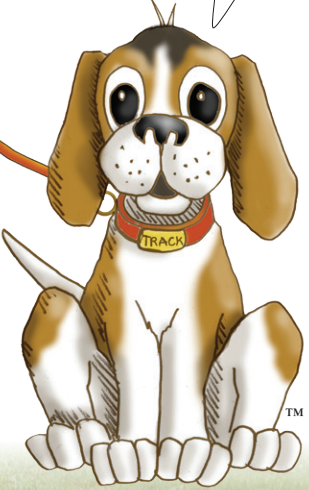
Brochure designed by Elise A. Kahl

**TRACK** your hike at [kidsinparks.com](http://kidsinparks.com) and get **FREE** prizes!



Thanks for joining us on the trail today! Visit our website to find more TRACK Trail™ adventures near you!

The next generation of stewards will help preserve the world's plants, animals, natural lands and our heritage. What will you do to make a difference?



*Kids in Parks...*  
Providing a network of fun-filled adventures that get kids and families active outdoors and connected to nature.



TRACK Trail Partners



**Rutherfordton**  
A MINTED ORIGINAL

Kids in Parks Founding Partners

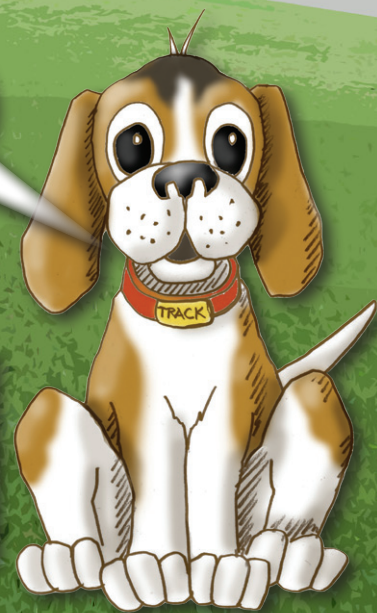


# The Town of Rutherfordton's Main Street Safari



Hey TRACK, let's go on a downtown safari!

Sounds fun, KIP! We can go on a journey through the Town of Rutherfordton.



Explore the Town of Rutherfordton and see what stories you can find hiding here!



# Discover Treasures in the Town of Rutherfordton

There are many historic things to see in downtown Rutherfordton. Walk down Main Street and discover a few of the stories this town has to share.



**A Changing View**

Many of the original buildings on Main Street still remain. Stand at the corner of Main and 1st streets. Face southwest and match up the view with this historical photo. What is now Hill's Hardware used to be the Southern Hotel. Circle items on the building that have stayed the same. Cross out what has changed.

Photo courtesy of Robin Lattimore

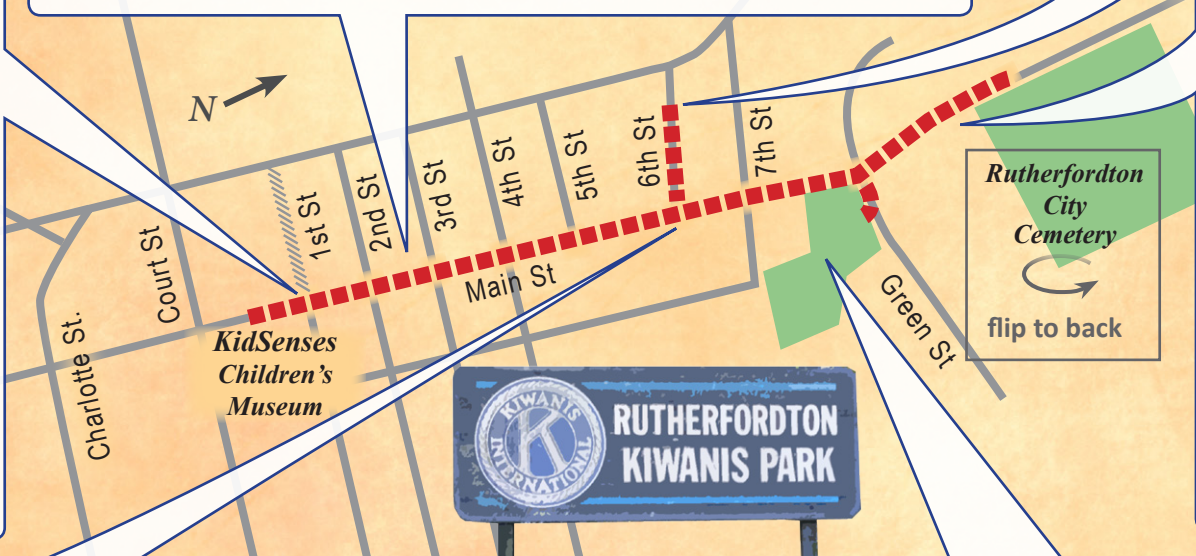
Inside, check out the grand staircase from the original hotel. How many steps do you think are on the staircase?

**Cedar of Lebanon**

The big tree in front of the courthouse is a cedar of Lebanon (*Cedrus libani*). It is over 75 years old! As the name suggests, the tree species is native to high mountains in the Middle East. The tree was used in ancient Egypt to build ships and its resin was used in mummification.

**Bechtler House**

Christopher Bechtler, Sr., minted the nation's first \$1 gold coins. Gold was mined in the area, melted into sheets, punched into discs, and stamped with words and numbers. He also worked on other gold objects like watches, jewelry, and guns. Notice the large windows of the Bechtler house. If you were to make detailed objects, why do you think large windows would be helpful? Make sure to check out the museum or visit the Bechtler Mint Park at 342 Gilboa Church Road where you can look inside the mine.



**St. Francis Episcopal Church**

Although this building looks like it was built in the medieval period, St. Francis Episcopal Church was completed in 1899. It is a beautiful example of Gothic Revival architecture. It was built of granite from a quarry just up the creek. Check out the church walls and circle the words that describe them.

	thick	smooth
rough	dull	orderly
jumbled	shiny	

flip to back

**St. John's Episcopal Church**

Find St. John's Episcopal Church and fill in the spaces to uncover details about this historical place.

**ST. JOHN'S EPISCOPAL CHURCH**

Completed in  The  original church building standing in  Listed on the National Register of Historic Places in 1971.

**Overmountain Victory Men**

During the Revolutionary War, the "Overmountain Men," a group of volunteer patriot soldiers, passed through here by following Cleghorn Creek. They were on their way to Kings Mountain to battle the British Loyalists, whom they defeated.

The Overmountain Men were made up of farmers and hunters who did not march in rows and fight out in open fields like the British expected. Instead, they adopted Native American methods of hunting and fighting in the woods. Pretend to be an Overmountain Man by following these steps:

1. Don't talk and make no sounds.
2. Walk slowly and carefully to avoid snapping twigs or crunching leaves.
3. Don't wave your arms or make any sudden movements.
4. Stop every few steps and listen.
5. If you see something (like a rabbit or bird) stop and slowly crouch down.

Illustration by Tony Geiger